

CENTRO DE CONGRESSOS  
CONGRESS CENTER

# Sala das Figueiras

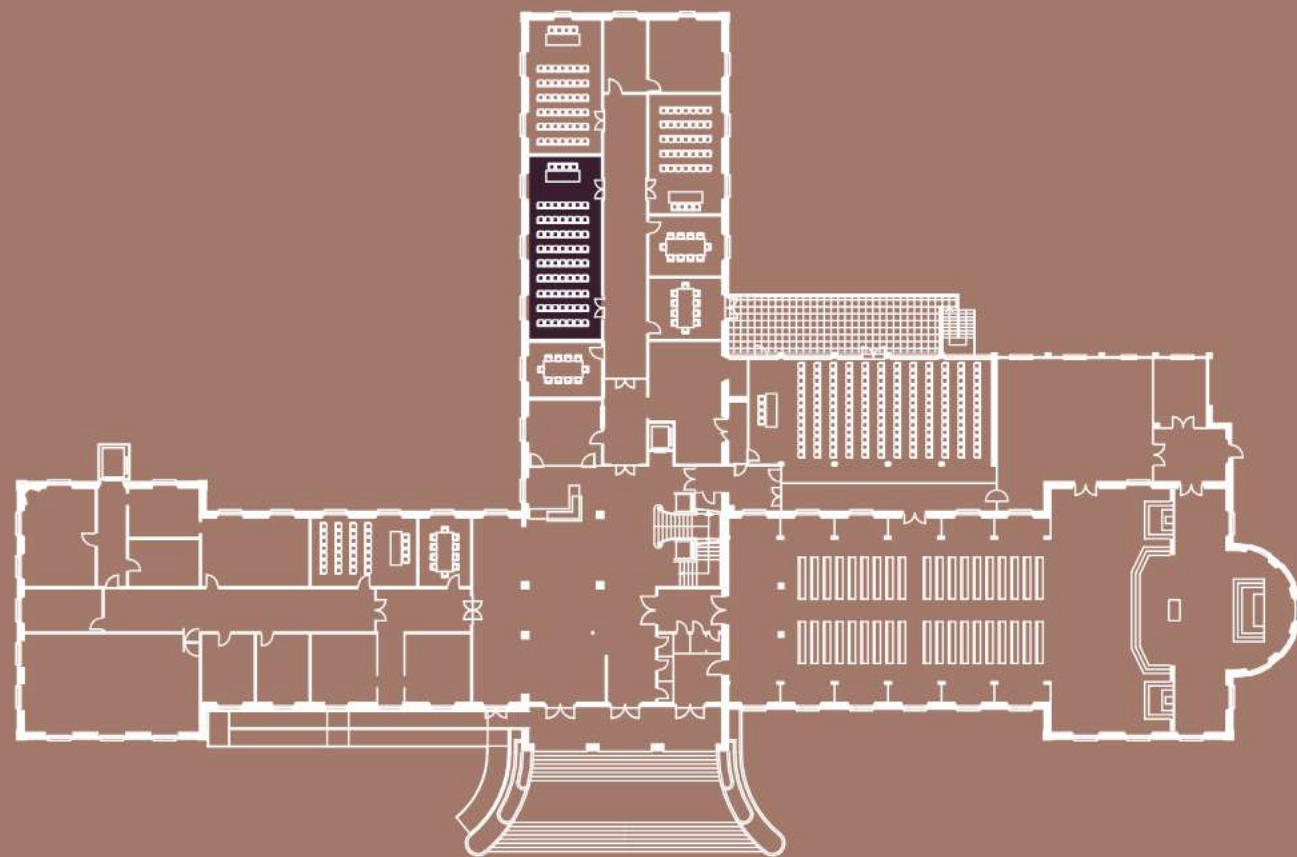
MEETING ROOM

**Acessos / Accesses**

- N<sup>o</sup> de portas / N<sup>o</sup> of Doors: 2
- Dimensões / Dimensions: 2m x 0,78m

**Especificações / Specifications**

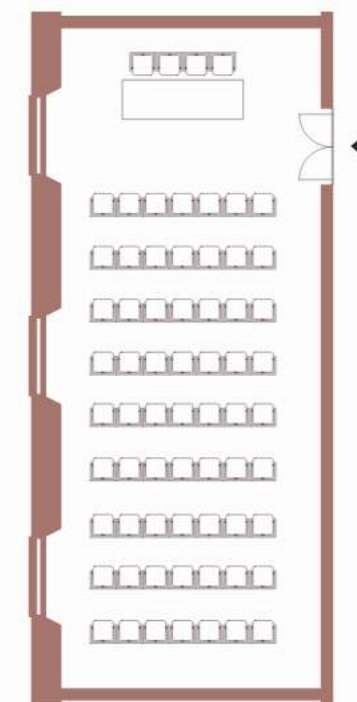
- Internet Wireless
- Voltagem / Voltage: 230
- Amperes / Amps: 16
- Ar condicionado / Air conditioning
- Sistema de iluminação por setores / Lighting system sectorised
- Luz natural / Natural light
- Sistema de som / Sound system



PISO  
FLOOR

# 01

Dimensões / Dimensions  
**13,1x5,15m**



m<sup>2</sup> M2 / Sqm  
**69**

Plateia / Theater  
**70**

Escola / School  
**36**

Altura / Height  
**2,5m**

Mesa U / U shape  
**32**

Cabaret  
**48**

